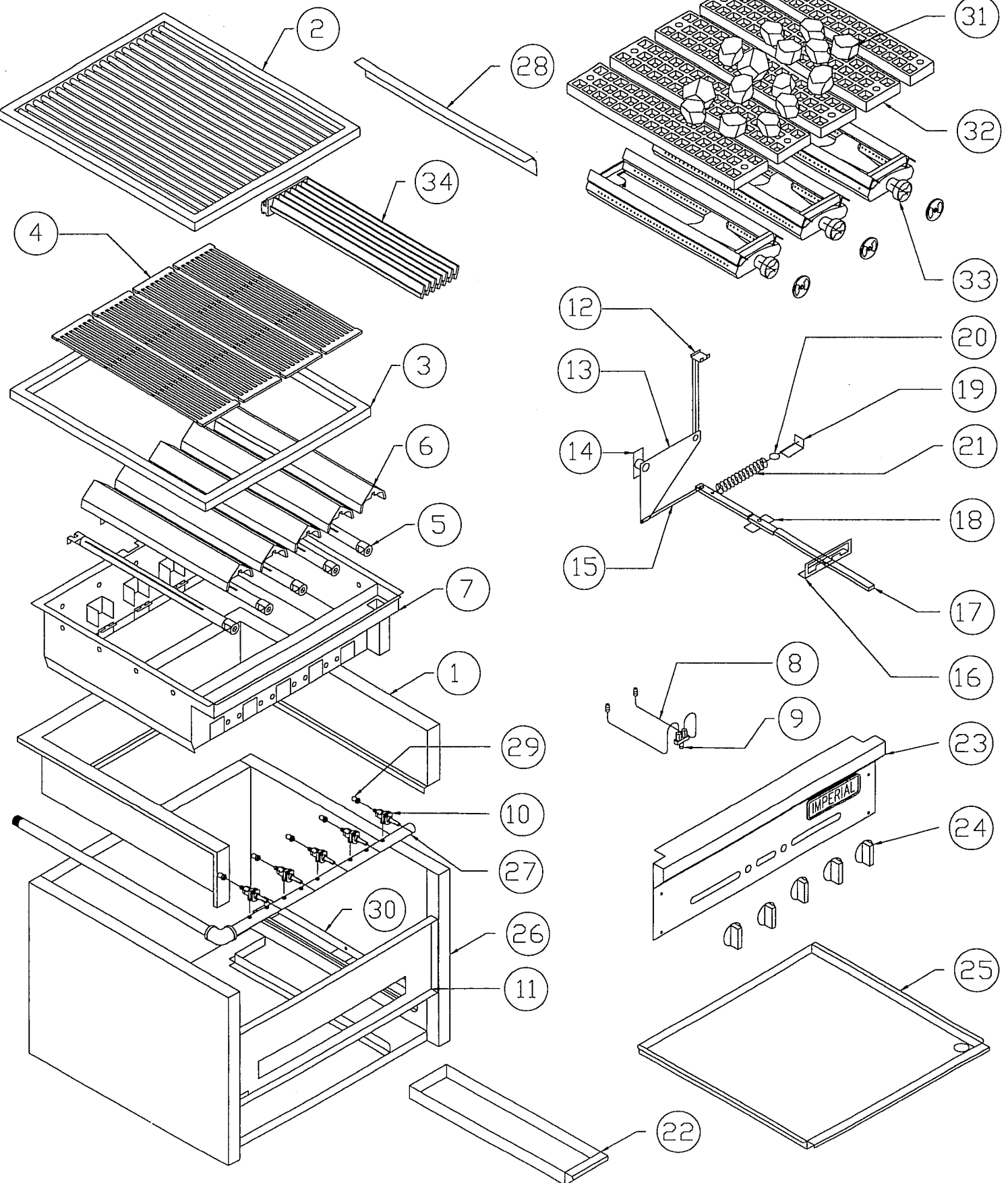


# IMPERIAL STEAKHOUSE BROILER REPLACEMENT PARTS



## IAB SERIES Steak House Broilers

ITEM NO.	DESCRIPTION		24"	30"	36"	48"	60"	72"
1	Top Flashing 24" (3 separate pieces specify)	24028	1					
	Top Flashing 30" (3 separate pieces specify)	24029		1				
	Top Flashing 36" (3 separate pieces specify)	24030			1			
	Top Flashing 48" (3 separate pieces specify)	24031				1		
	Top Flashing 60" (3 separate pieces specify)	24032					1	
	Top Flashing 72" (3 separate pieces specify)	24033						1
2	Round Rod Top Grate 24"	28342	1					
	Round Rod Top Grate 30"	28343		1				
	Round Rod Top Grate 36"	28344			1			
	Round Rod Top Grate 48"	28345				1		
	Round Rod Top Grate 60"	28346					1	
	Round Rod Top Grate 72"	28347						1
3	Top Grate Support Frame 24"	24034	1					
	Top Grate Support Frame 30"	24035		1				
	Top Grate Support Frame 36"	24036			1			
	Top Grate Support Frame 48" (set of 2)	24037				1		
	Top Grate Support Frame 60" (set of 2)	24038					1	
	Top Grate Support Frame 72" (set of 2)	24039						1
4	Top Grate Cast Iron 5" X 21"	1206	4	5	6	8	10	12
***	IABR Top Grate Side (24-30-60-72)	33460	1	1			1	2
5	Burner W / Air Shutter - S/S	1020	4	5	6	8	10	12
6	Burner Radiant - Cast Iron	5025	4	5	6	8	10	12
	Burner Radiant - S/S	1228	4	5	6	8	10	12
	Burner Radiant Filler - S/S	1229	4	5	6	8	10	12
	Radiant Support	33456	8	10	12	16	20	24
7	Liner 24"	28348	1					
	Liner 30"	28349		1				
	Liner 36"	28350			1			
	Liner 48"	28351				1		
	Liner 60"	28352					1	
	Liner 72"	28353						1
<b>Please Specify Model No. Of Broiler When Ordering</b>								
8	Pilot Burner Assembly - Char-Rock	20600	2	3	2	5	6	7
	Pilot Burner Assembly - Radiant	20601	2	5	6	8	10	12
	Pilot Burner Bracket	33456						
9	Adjustable Double Pilot Valve - Brass	1003	1 - 2	1 - 2	3	2 - 4	5 - 3	6
	Adjustable Single Pilot Valve - Brass	1607		1 - 1	2	1		1
10	Burner Gas Valve (Brass) W / Out Orifice	1610	2 - 4	3 - 5	4 - 6	5 - 8	6 - 10	7 - 12
11	Heat Shield 24"	20610	1					
	Heat Shield 30"	20611		1				
	Heat Shield 36"	20612			1			
	Heat Shield 48"	20613				1		
	Heat Shield 60"	20614					1	
	Heat Shield 72"	20615						1
12	Lifting Arm	28372	1	1	1	2	2	2
13	Pivot Plate	24240	1	1	1	2	2	2
14	Pivot Pin Bracket	28373	1	1	1	2	2	2
15	Pivot Connecting Rod	24141	1	1	1	2	2	2
	Handle Steak House Broil	30093	1	1	1	2	2	2
	Shaft Steak House Broil	30092	1	1	1	2	2	2
16	Adjuster Locking Bracket	28374	1	1	1	2	2	2
17	Handle, Flat Bar Style	24142	1	1	1	2	2	2
17A	Handle, Round	30380	1	1	1	2	2	2
18	Handle Pivot Bracket	28375	1	1	1	2	2	2
19	Spring Mounting Bracket	24043	1	1	1	2	2	2

## IAB SERIES Steak House Broilers

ITEM NO.	DESCRIPTION		24"	30"	36"	48"	60"	72"
20	Adjusting Eye Bolt	30303	1	1	1	2	2	2
21	Spring	30355	1	1	1	2	2	2
22	Grease Can	28377	1	1	1	2	2	2
	IABR Grease Can	31831	1	1	1	2	2	2
23	Valve Cover 24"	24045	1					
	Valve Cover 30"	24046		1				
	Valve Cover 36"	24047			1			
	Valve Cover 48"	24048				1		
	Valve Cover 60"	24049					1	
	Valve Cover 72"	24050						1
24	Burner Knob	36330	2 - 4	3 - 5	4 - 6	5 - 8	6 - 10	7 - 12
25	Crumb Tray 24"	24150	1					
	Crumb Tray 30"	24151		1				
	Crumb Tray 36"	24152			1			
	Crumb Tray 48"	24153				1		
	Crumb Tray 60"	24154					1	
	Crumb Tray 72"	24155						1
26	Main Body 24"	28380	1					
	Main Body 30"	28381		1				
	Main Body 36"	28382			1			
	Main Body 48"	28383				1		
	Main Body 60"	28384					1	
	Main Body 72"	28385						1
27	Manifold 24"	20620	1					
	Manifold 30"	20621		1				
	Manifold 36"	20622			1			
	Manifold 48"	20623				1		
	Manifold 60"	20624					1	
	Manifold 72"	20625						1
<b>Please Specify Model No. Of Broiler When Ordering</b>								
28	Manifold Pipe Heat Shield	20605	1	1	1	1	1	1
29	Burner Orifice (NAT.) Char-Rock	2063	2	3	4	5	6	7
	Burner Orifice (L.P.) Char-Rock	2068-1	2	3	4	5	6	7
	Burner Orifice (NAT.) Radiant	1700-46	4	5	6	7	8	9
	Burner Orifice (L.P.) Radiant	8092	4	5	6	7	8	9
30	Crumb Tray Guide	20606	2	2	2	4	4	4
31	Char-Rock (20 lbs. Per Box)	1080	1	1	2	3	4	5
32	Bottom Grate - Cast Iron 4" X 20"	1222	4	6	7	8	9	10
	Bottom Grate - Cast Iron 3" X 20"	1222-1	1		1	1	1	1
33	Burner Assembly W / Air Shutter Cast Iron	11050	2	3	4	5	6	7
34	Slanted Top Grate - Cast Iron 5" X 21"	11205	4	5	6	7	8	9